



THE SAND DOLLAR at VERONA OCEANSIDE

THE SAND DOLLAR - UNIT C

3 Bedrooms • 2.5 Bathrooms • 2-Car Garage • 2,396 ft² Living Area • 3,064 ft² Under Roof

The Sand Dollar is Verona Oceanside's premiere three-bedroom townhome. All three bedrooms are found on the third floor along with a laundry room and large storage space for convenience. The crown jewel of this townhome is the master bedroom with access to a private covered deck that features breathtaking ocean views. Take the elevator or the stairs down to the second floor, where you'll find the living, kitchen, and dining areas to all be one expansive space, perfect for entertaining. On the first floor, a large flex space offers access to the two-car garage or covered lanai and courtyard at the front of the home. A full bath is also located on the bottom level for convenience.

* Renderings may vary from actual home. Please see disclaimer for more details.

\$1,159

ESTIMATED SAVINGS



This home has a HERS Score of 61 and is estimated to save you \$1,159 on your annual utility bills vs. a resale home.

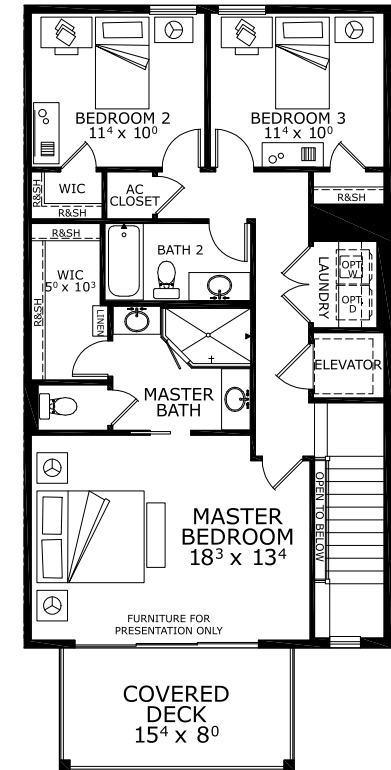
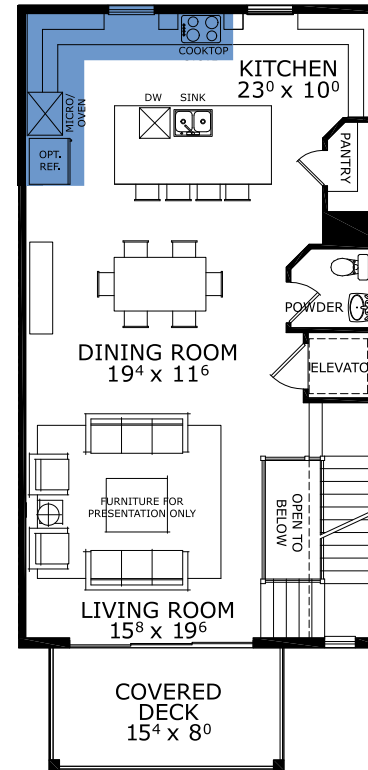
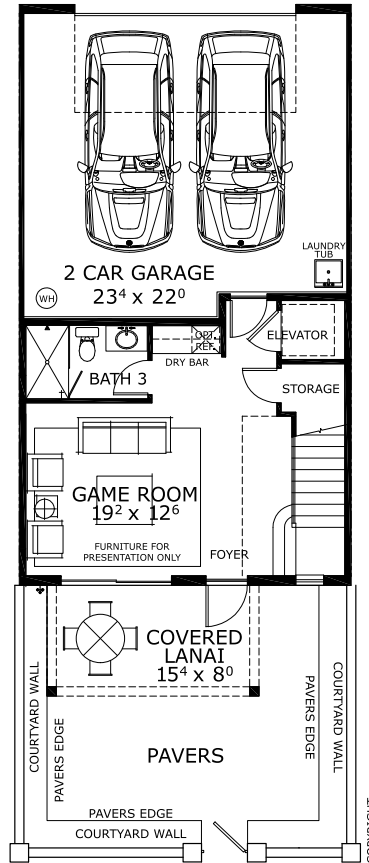
THE SAND DOLLAR

3 Bedrooms • 2.5 Bathrooms • 2-Car Garage

Verona Oceanside Available in
Ormond by the Sea, FL Verona Oceanside

Living Area: 2,396 ft² Under Roof: 3,064 ft²

FIRST-THIRD FLOOR



No Maintenance Townhomes!

©1994-2023: ICI Homes™ is a registered trademark whose divisions operate under CBC1264300, CBC1262120, CRC1333091, CBC1262114, CBC1257263 and CBC1265743. Features may be plan specific and vary. Please consult a Sales Associate for specific feature information. All new ICI Homes come with a HBW 2-10 warranty. Certain elevations may have additional fees. Prices may not include lot premiums, upgrades, and options. Inventory home completion date may vary. All prices subject to change without notice. All plans are property of ICI Homes and cannot be copied or used without permission. Prices, promotions, incentives, features, options, amenities, floor plans, elevations, site maps, designs, materials, and dimensions are for illustrative purposes only and subject to change without notice. Plans should not be relied upon as representation express or implied of final sizes, locations, features or dimensions. Square footage and dimensions are estimated and may vary from description. All HERS ratings and savings are calculated by a third party energy rating service. Actual savings will depend on a number of factors, including but not limited to daily activities, home maintenance practices, household size, use of appliances, lighting and internal climate control systems, lot orientation, and surrounding climate and weather conditions. **Garage Orientation R / L:** _____



Created on 12/22/2023