

Sequoia

2,470 Living Sq.Ft. | 3,320 Total Sq.Ft. | 4 Bedroom, 3 Bath, Multi-Gen Suite



Exterior A



Exterior B



Exterior C



2023 SeaGate Homes, LLC. CGC1518372. This Artist Rendering is conceptual only. Actual construction and dimensions may vary and are subject to change without notice.

SeagateHomes.com

Sequoia Base Floor Plan



MAIN MEASUREMENTS

- COVERED ENTRY**
9'4" Ceiling
(11'4" Ceiling on C Elevation)
- KITCHEN**
18'4"x10'8"
9'4" Ceiling
- GREAT ROOM**
19'7"x17'11"
9'4" Ceiling
- DINING ROOM**
7'5"x13'10"
9'4" Ceiling
- OWNER'S SUITE**
13'7"x14'9"
9'4" Ceiling
- BEDROOM 2**
11'5"x11'4"
9'4" Ceiling
- BEDROOM 3**
11'5"x11'5"
9'4" Ceiling
- GARAGE**
30'8"x26'0"
9'4" Ceiling
- COVERED LANAI**
16'7"x10'0"
9'4" Ceiling

MULTI-GEN MEASUREMENTS

- BEDROOM SUITE**
12'0"x12'0"
9'4" Ceiling
- KITCHENETTE**
12'0"x11'9"
9'4" Ceiling
- LIVING ROOM**
10'10"x8'8"
9'4" Ceiling

LEGEND

	5-Shelves		Shelf w/Rod
	Tile		Carpet
	Arch		Attic Access
	Wet Area		
	Cable		Phone
			USB

SQ. FT. SUMMATION

MAIN LIVING AREA	1,890 Sq.Ft.
MULTI-GEN LIVING AREA	580 Sq.Ft.
TOTAL LIVING AREA	2,470 Sq Ft.
GARAGE	649 Sq.Ft.
COVERED ENTRY	38 Sq.Ft.
COVERED LANAI	163 Sq.Ft.
TOTAL UNDER ROOF	3,320 Sq Ft.

Rev. 8/1/23



Available Options

MEASUREMENTS

SLIDING DOOR WITH PATIO

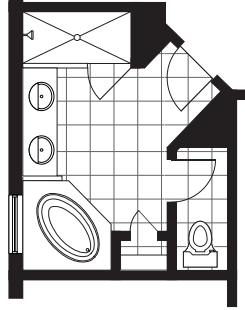
12'4"x5'0"

EXPANDED LANAI

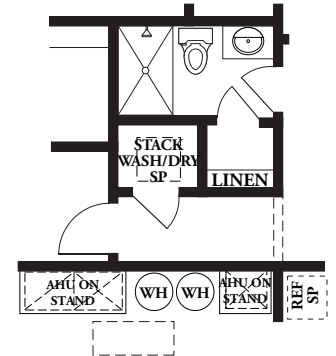
28'11"x25'3"

9'4" Ceiling

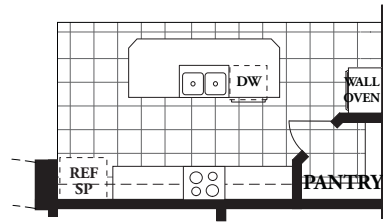
OPTIONAL OWNER'S BATH



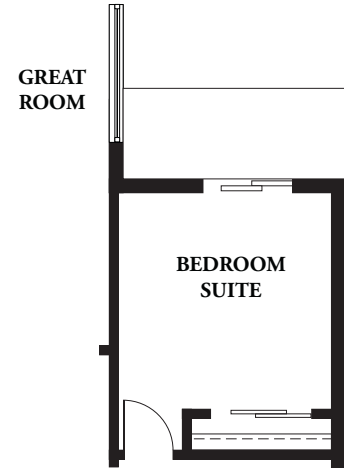
SECOND LAUNDRY



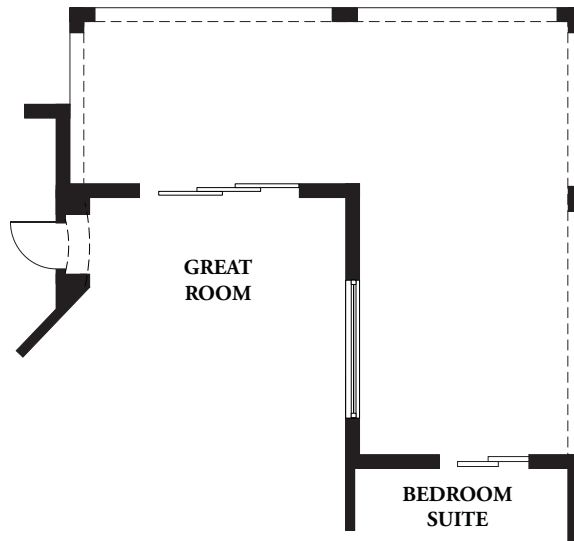
GOURMET KITCHEN



SLIDING DOOR WITH PATIO (IN LIEU OF WINDOW)



EXPANDED LANAI



LEGEND

Arch	Cable
Attic Access	Phone
Tile	USB

Rev. 8/30/23

Available Options

MEASUREMENTS

GREAT ROOM

19'7"x17'11"

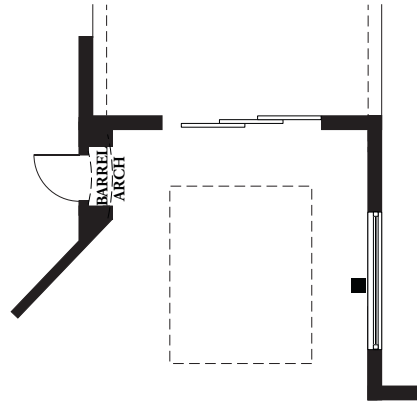
10"0" Recess

OWNER'S SUITE

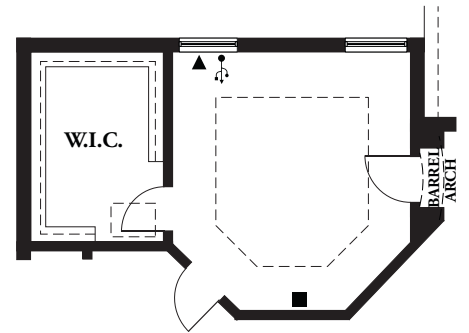
13'7"x14'9"

10"0" Recess

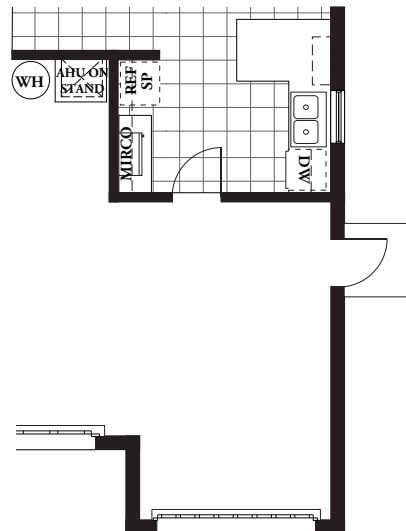
RECESS CEILING GREAT ROOM



RECESS CEILING OWNER'S SUITE



GARAGE SERVICE DOOR



LEGEND

