

# KINGSLEY II

1,639 Living Sq.Ft. | 2,251 Total Sq.Ft.\* | 2 Bedroom, 2 Bath, Den



EXTERIOR C



EXTERIOR A



EXTERIOR B



2023 SeaGate Homes, LLC. CGC1518372. This Artist Rendering is conceptual only. Actual construction and dimensions may vary and are subject to change without notice.

[SeagateHomes.com](https://SeagateHomes.com)

# Kingsley II Base Floor Plan



## MEASUREMENTS

### COVERED ENTRY

9'4" Ceiling

### FOYER

9'4" Ceiling

### KITCHEN

11'8"x14'7"

9'4" Ceiling

### GREAT ROOM

15'9"x22'3"

9'4" Ceiling

### DINING ROOM

11'8"x10'10"

9'4" Ceiling

### OWNER'S SUITE

12'0"x15'5"

10'0" Recess Ceiling

### OWNER'S BATH

9'4" Ceiling

### BEDROOM 2

14'2"x10'8"

9'4" Ceiling

### DEN

11'11"x12'3"

9'4" Ceiling

### BATH 2

9'4" Ceiling

### LAUNDRY

9'4" Ceiling

### GARAGE

19'1"x20'0"

8'0"-9'4" Ceiling

### COVERED LANAI

10'7"x12'4"

9'4" Ceiling

Rev. 1/20/2023

## LEGEND

	5-Shelves		Shelf w/Rod
	Tile		Carpet
	Arch		Attic Access
	Wet Area		
	Cable		Phone
			USB

## SQ. FT. SUMMATION

LIVING AREA	1,639 Sq.Ft.
GARAGE	416 Sq.Ft.
CVD ENTRY	64 Sq.Ft.
CVD LANAI	132 Sq.Ft.
<b>TOTAL UNDER ROOF*</b>	<b>2,251 Sq.Ft.</b>

\*C ELEVATION ADDS 84 Sq.Ft.





# Available Options

## MEASUREMENTS

### BEDROOM 3

11'11"x10'0"

9'4" Ceiling

### SUNROOM

10'4"x12'0"

9'4" Ceiling

### EXPANDED SUNROOM

21'0"x12'0"

9'4" Ceiling

### EXPANDED LANAI

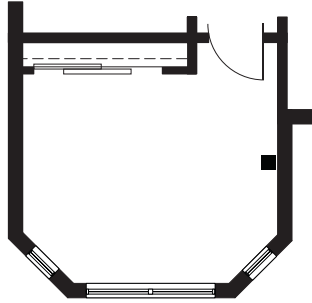
21'4"x12'4"

9'4" Ceiling

### BEDROOM 3

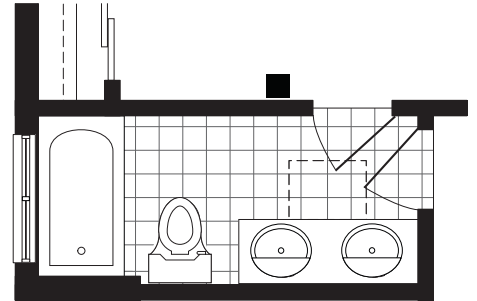
(IN LIEU OF DEN)

\*If selected, phone and usb outlets will move from den to kitchen



### BATH 2 OPTIONS

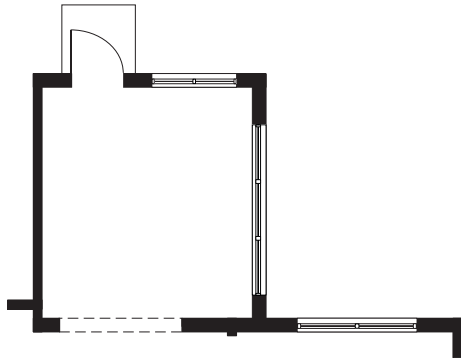
BEDROOM 2 DOOR & DOUBLE VANITY  
(AVAILABLE SEPARATELY)



### SUNROOM

(IN LIEU OF COVERED LANAI)

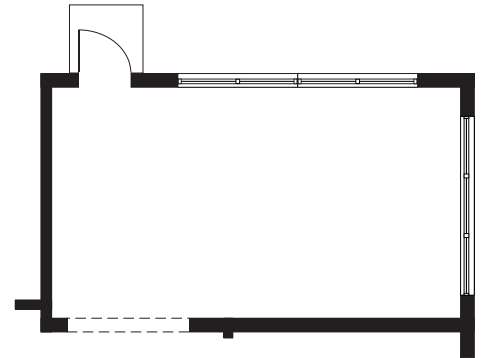
ADDS 125 SQ FT



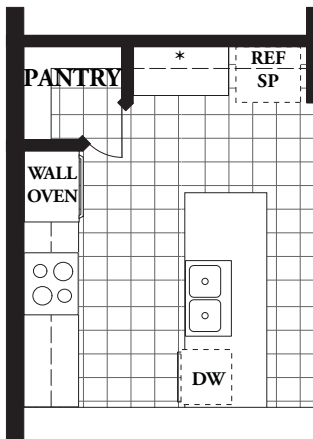
### EXPANDED SUNROOM

(IN LIEU OF COVERED LANAI)

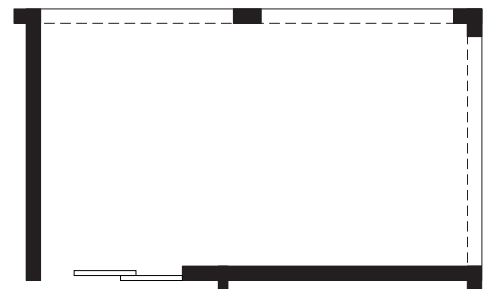
ADDS 252 SQ FT



### GOURMET KITCHEN



### EXPANDED LANAI



### LEGEND


# Available Options

## MEASUREMENTS

### GREAT ROOM

15'9" x 22'3"

10'0" Recessed Ceiling

### EXPANDED GARAGE -2 FT DEPTH

19'1" x 22'0"

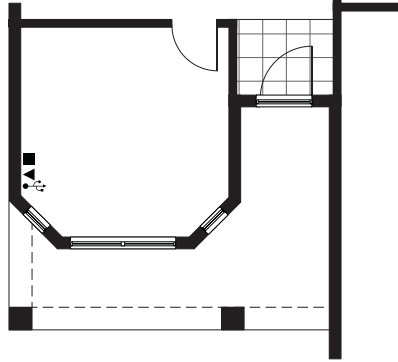
8'0"-9'4" Ceiling

### EXPANDED GARAGE -5 FT WIDTH

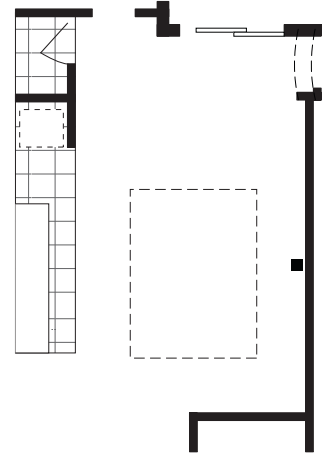
24'1" x 20'0"

8'0"-9'4" Ceiling

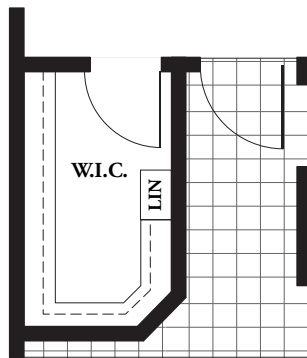
### C ELEVATION ENTRY (ADDS 84 TOTAL SQ FT)



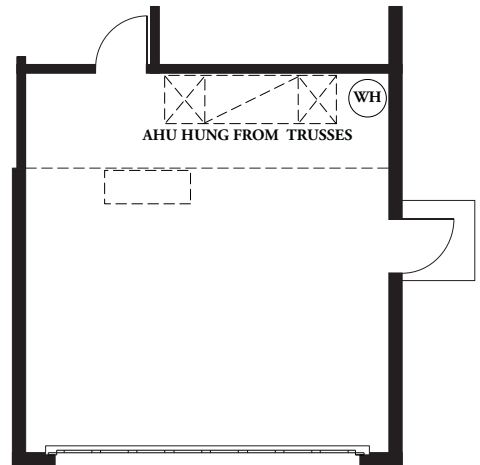
### GREAT ROOM RECESSED CEILING



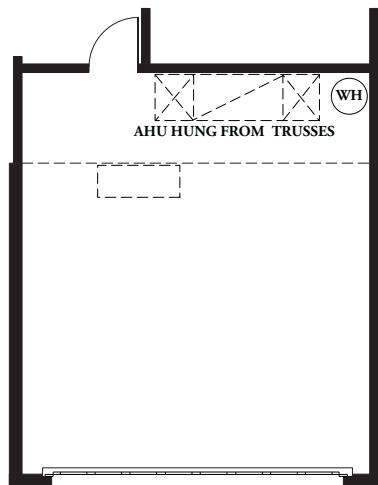
### OWNER'S SUITE W.I.C. DOOR



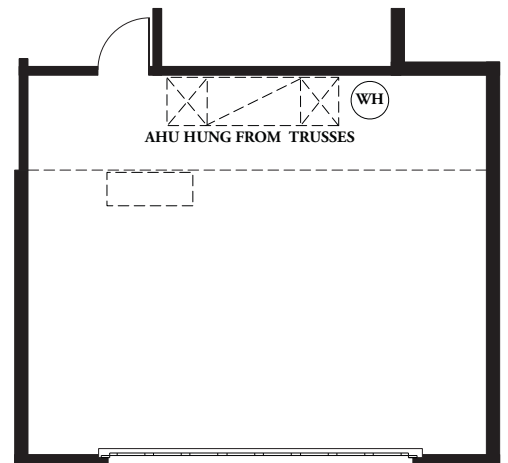
### GARAGE SERVICE DOOR



### EXPANDED GARAGE - 2 FT DEPTH



### EXPANDED GARAGE - 5 FT DEPTH



## LEGEND