

# MONROE II

1,738 Living Sq.Ft. | 2,558 Total Sq.Ft. | 2 Bedroom, 2 Bath, Den



EXTERIOR A



EXTERIOR B



2023 SeaGate Homes, LLC. CGC1518372. This Artist Rendering is conceptual only. Actual construction and dimensions may vary and are subject to change without notice.

[SeaGateHomes.com](https://www.seagatehomes.com)

# Monroe II Base Floor Plan



## MEASUREMENTS

### COVERED ENTRY

10'8" Ceiling

### FOYER

9'4" Ceiling

### KITCHEN

10'8"x13'10"

9'4" Ceiling

### GREAT ROOM

14'5"x20'5"

9'4" Ceiling

### DINING ROOM

11'3"x13'1"

9'4" Ceiling

### OWNER'S SUITE

12'3"x14'7"

10'0" Recess Ceiling

### OWNER'S BATH

9'4" Ceiling

### BEDROOM 2

12'2"x13'3"

9'4" Ceiling

### DEN

10'4"x10'6"

9'4" Ceiling

### BATH 2

9'4" Ceiling

### LAUNDRY

9'4" Ceiling

### GARAGE

29'3"x20'0"

8'0"-9'4" Ceiling

### COVERED LANAI

12'6"x8'11"

9'4" Ceiling

## LEGEND

	5-Shelves		Shelf w/Rod
	Tile		Carpet
	Arch		Attic Access
	Wet Area		
	Cable		Phone
	USB		

## SQ. FT. SUMMATION

LIVING AREA	1,738 Sq.Ft.
GARAGE	645 Sq.Ft.
CVD ENTRY	63 Sq.Ft.
CVD LANAI	112 Sq.Ft.
<b>TOTAL UNDER ROOF</b>	<b>2,558 Sq.Ft.</b>

Rev. 2/13/23



# Available Options

## MEASUREMENTS

### ALTERNATE KITCHEN

10'8"x19'2"

9'4" Ceiling

### GOURMET KITCHEN

10'8"x16'2"

9'4" Ceiling

### SUNROOM

12'12"x8'8"

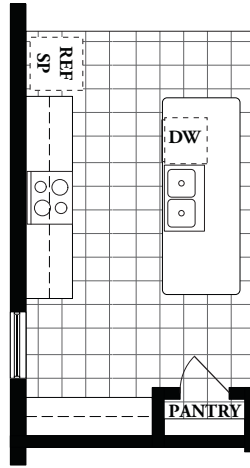
9'4" Ceiling

### GREAT ROOM

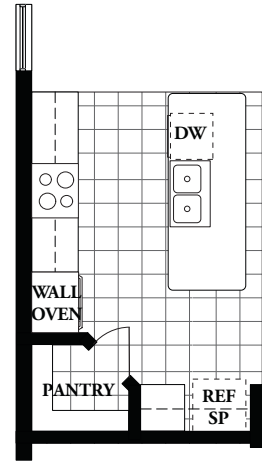
10'8"x13'10"

10'0" Recess Ceiling

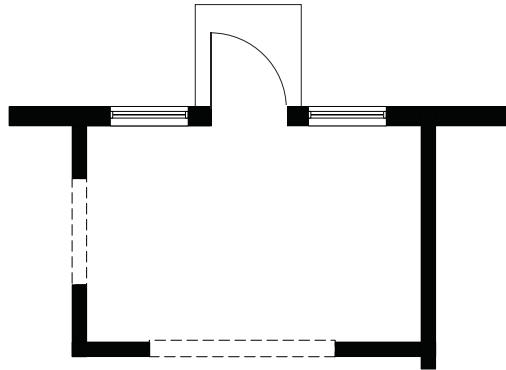
### ALT KITCHEN (REMOVES DEN CLOSET)



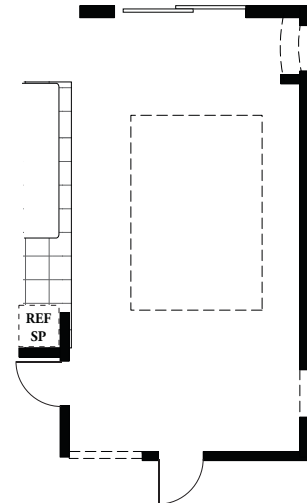
### GOURMET KITCHEN



### SUNROOM (IN LIEU OF COVERED LANAI) ADDS 173 SQ FT



### GREAT ROOM RECESSED CEILING



## LEGEND

Arch	Cable
Attic Access	Phone
Tile	USB

# Garage Options

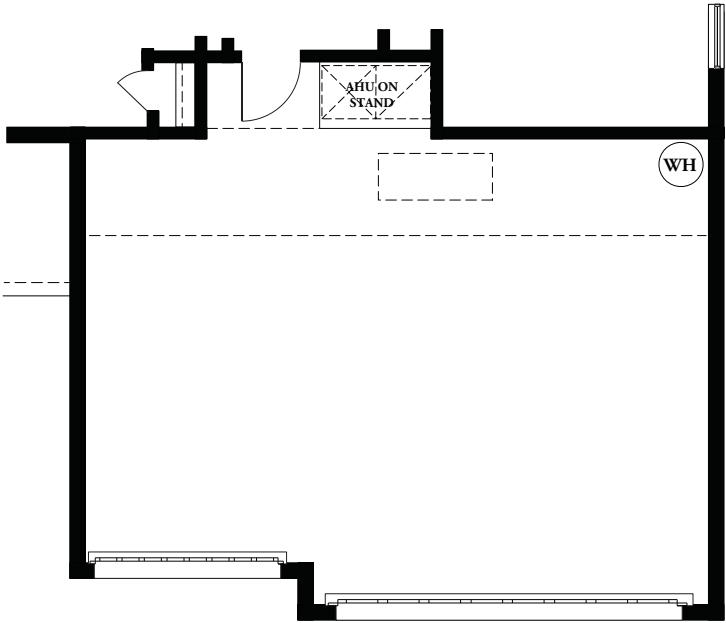
**MEASUREMENTS**

**EXPANDED GARAGE -2 FT DEPTH**

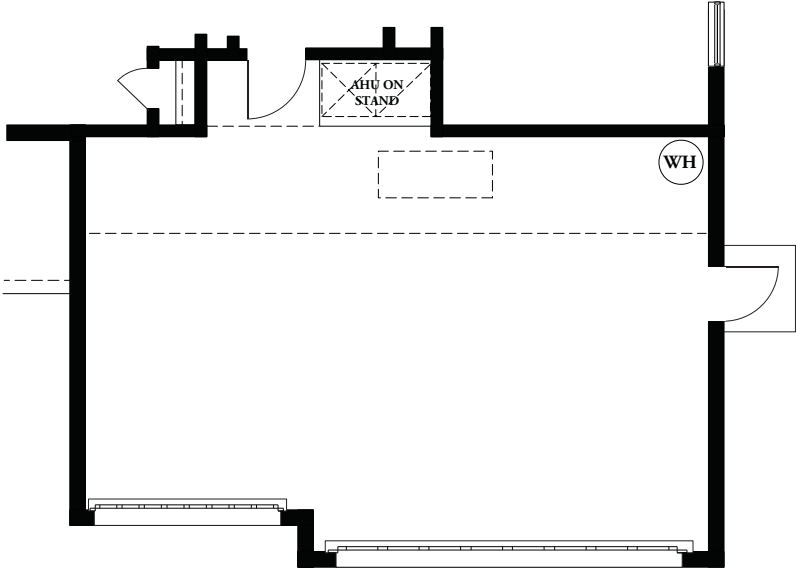
29'3"x22'0"

8'0"-9'4" Ceiling

**EXPANDED GARAGE - 2 FT DEPTH**



**GARAGE SERVICE DOOR**



**LEGEND**

	Arch		Cable
	Attic Access		Phone
	Tile		USB

